

**Friends of Big Finn Hill Trails
Committee Meeting**

**Feb 16, 2016
7 – 8:30 pm
Presbyterian Church
7718 NE 141st St, Kirkland, WA 98034**

MEETING MINUTES

Action Items

<i>ACTION</i>	<i>Who</i>
Annual Meeting: Reserve venue and communicate date/location to committee – NB: needs to be at least 30 days in advance for communicate ASAP	Troy
Annual meeting agenda: draft to review with committee by next meeting	Joe & Nick
Reserve room for next meeting (March 16)	Troy
Facilitate next meeting	Not identified
Notes at next meeting	Not identified

1. Meeting was called to order at 7:00 pm.

In attendance:

- Organizing committee: Jeanette Leach – Walkers, Janice Gerrish – At Large, Bob Gerrish – Dog Walkers, Joe Przychodzen – Neighbors, Bill Blanchard – Neighbors, Gary Johnson – Dog Walkers, Mike Dierken – Walkers Mark Garnick – Bike
- King County Parks: Mike Crandell
- Community: George Meredith
- Facilitator: Mike Dierken
- Meeting Notes: Jeanette Leach
- Not in attendance: Troy Kasper (bike); Nicholas Rhodes (at large)

• **Meeting business**

- A quorum was established.
- January minutes were approved.
- KC Parks Update – Mike Crandell
 - KC parks reorganization will be rolled out Feb 29. “Resource area 4” will now be called “Bear Creek District” and will have additional areas of responsibility (e.g. 60 acres).
 - Trail markers on the east side were repaired and replaced by KC Parks staff. #4 was installed with vandal guards and concrete, but still has been removed.

(Note: Feb 17 George and Jeanette discovered several others were also missing (and couldn't be found)

- Volunteer project March 3 by Environmental Adventure School replacing the bridge over a seasonal creek between E42 and E43. They will be replacing the rotting tread with new tread (rough sawn cedar). The new bridge will be 4 feet wide with bumpers.
- March 1 ball field activities start gearing up so KC staff will have that as a major focus.
- Well 2 approx.. 4 feet deep reported by Jill (between W51 & 69 south of trail). It will be fenced.
- Dirt: 20 yards will be delivered to Big Finn and stored by field 2.

2. Organizing Committee Operations

• Annual Meeting

- Action: Reserve venue and communicate date/location to committee (Troy) – NB: needs to be at least 30 days in advance for communication.
- Action: Annual meeting committee (Joe, Nick, Troy and Frana) to draft agenda to review with committee.

Status:

- Date and venue not yet identified. Committee requests for this to happen in next week or two and communicate with entire committee
- Agenda not finalized. Mike C suggested to emphasize BFH Park is great! Committee is great! History. How did we get here. What we've accomplished. Administrative details. Keep it positive. Keep communication open. Break into subgroups for voting.
- Communications:
 - Two publicity announcements reviewed. Mike C noted that there are standards for announcements on the kiosk and website.
 - Bill Blanchard provided a list of places for announcements (please see Attachment A of these minutes)
 - Emails of group, and subgroup: Mike Dierken made a proposal to have consistent googlegroup names. Please see Attachment B of these minutes.
- Recommendation major focus of discussion at next meeting.

3. Trail Project Planning and Implementation

• Orchard Restoration Project –Janice

- The edges of the clearing have been defined, now blackberry roots are being removed. Next work party Saturday Feb 27 10 am to noon. Bring shovels and gloves to remove blackberry roots.
- Considerable trash in the area, including lots of broken glass. Depth of trash pile not known. At each work party trash is picked up and carried out.

• Status of upcoming projects from trail plan:

- Phase 1:

- “magic log ride” some work is needed to complete this project, improve drainage and narrow the entrance on the north end. Leader: not identified
- Project at area 31-33 (where WTA removed bike jumps and planted ferns) Bike jumps in trail plan to be constructed. Leader: not identified
- Signs: trail maps on both sides of park. Leader: KC Parks
- Phase 2: (It was noted that trail closures need to occur during winter planting season, ideally by end of March. It was noted all projects need to follow the steps defined in the Implementation Plan).
 - Close West 57-63 Leader: Bill Blanchard
 - Close West 48- 49-50 Leader George Meredith & Jeanette Leach
 - Open West 47 to slightly north of 50 (W 50 will be moved to that location) Leader: Joe Przychodzen
 - Open West 8 – 22 (aka “Hall Pass”) Leaders: Troy Kasper, Mark Garnick

Other trail projects discussion:

Inquiry made about new trails and clearing permit(s). Mike Crandell commented that if one could prove previous road/trail in the area, then no permit needed. Reference made to 1936 aerial photos of the area. (Post meeting note: see attachment C. Readers can study further at King County Parks <http://www.kingcounty.gov/operations/GIS/Maps/iMAP.aspx>).

Inquiry made about “dog park” status. Group mentioned that dog park is not part of the trail plan. For the record, plan comments on dogs - please see Attachment D excerpt from Trail plan.

4. Next Meetings

- March 16 location TBD
- April 20 scheduled at Inglewood Prebs.

Attachment A: Places to communicate Friends of BF Trails events compile by Bill B:

Finn Hill Neighborhood Alliance <http://finnhillalliance.org/>

Kirkland/Bothell Reporters:

Events:

<http://www.kirklandreporter.com/calendar/submit/>

<http://www.bothell-reporter.com/calendar/submit/>

Press Releases:

http://www.kirklandreporter.com/contact_us/?contact=pressRelease

http://www.bothell-reporter.com/contact_us/?contact=pressRelease

Neighborhood News

https://seupperholmespoint.nextdoor.com/invitation_email/?is=navbar_menu

King County Parks Web Site:

<http://www.kingcounty.gov/services/parks-recreation/parks.aspx>

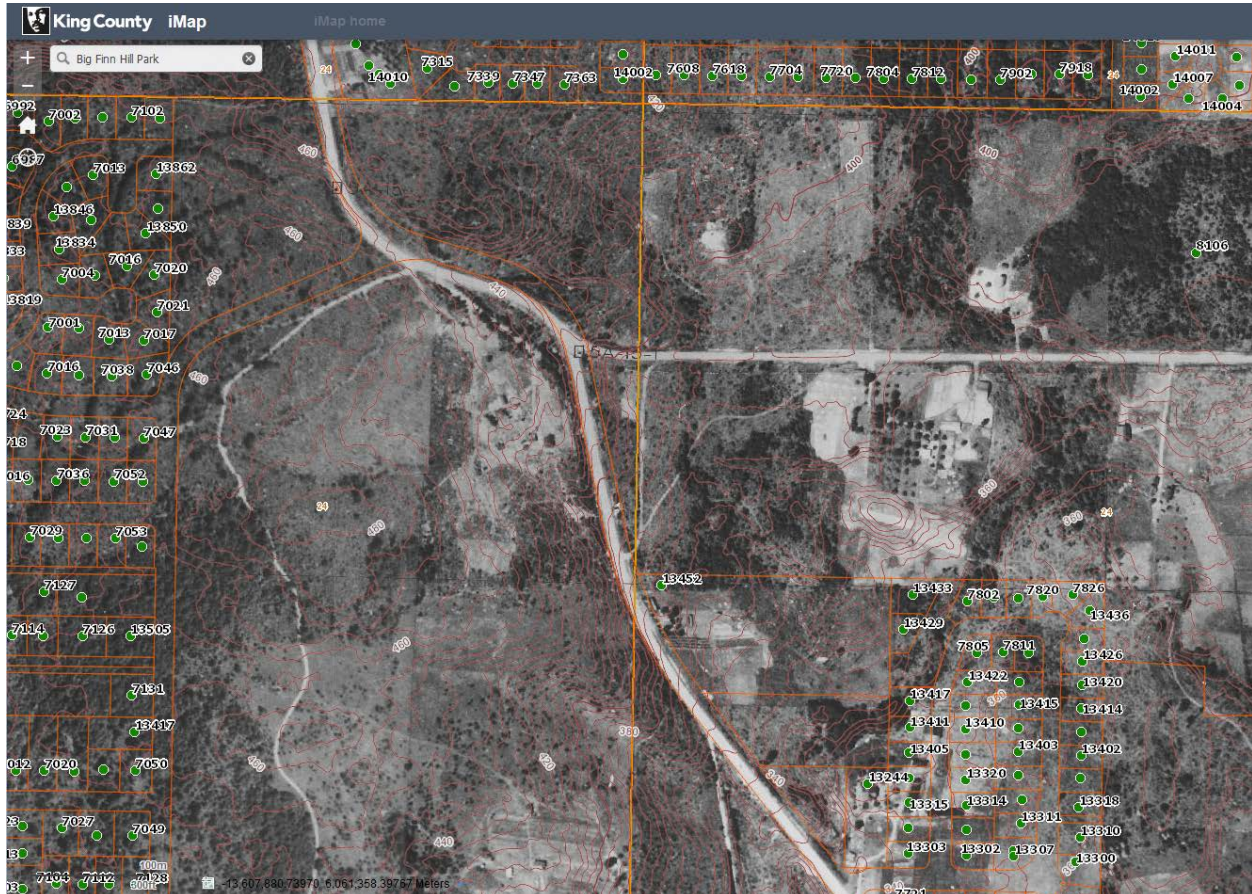
Seattle Times (local News):

<http://www.seattletimes.com/newsroom-staff/#local-news>

Attachment B: Group Email addresses. All except the organizing committee address are public.

- FOBFH@googlegroups.com
 - public email distribution list, open to all of the community. This is shown on the King County Parks website.
- friends-of-big-finn-hill-trails@googlegroups.com
 - organizing committee and king co parks only
- **at-large**-friends-of-big-finn-hill-trails@googlegroups.com
- **bike**-friends-of-big-finn-hill-trails@googlegroups.com
- **neighbors**-friends-of-big-finn-hill-trails@googlegroups.com
- Dogs-friends-of-big-finn-hill-trails-**dogs**@googlegroups.com
- **walkers**-friends-of-big-finn-hill-trails@googlegroups.com

Attachment C: 1936 Aerial view of portion of Big Finn Hill Park from King County iMap. Current property boundaries and road boundaries are in super imposed in orange



Attachment D: Big Finn Trails Plan section on Dogs (snippet from plan)

Dogs

Dog walkers are one of the primary users of the Big Finn trails and many dog walkers would like the trails officially designated as “off leash”. King County’s and the City of Kirkland’s park rules require that all dogs must be on a leash at all times except within formally designated off leash parks. Any change to the leash rule would require the county to amend its park rules under Title 7 of the King County Code, which would require approval by the King County Council. The committee felt this issue required much more investigation and consideration. The committee’s recommendation is for dog owners to organize a group to develop a viable proposal for future consideration by King County Parks.